

WASHTECH®

Guaranteed by the
5-2-1
promise

5 years warranty on stainless cabinet (parts only)
2 years warranty on wash pump (parts and labour)
1 year parts and labour warranty

WASHTECH CD 100 Series 2 RACK CONVEYOR DISHWASHER

The CD 100 is a fully automatic rack conveyor dishwasher with a powerful wash zone, followed by a final rinse zone which is controlled to ensure that water is consumed only when racks are in the rinse zone. Standard capacity setting is 100 racks per hour and at this speed the machine uses a maximum of 300 litres of water per hour. Higher speed settings of up to 200 racks per hour are available on request. Specify direction with order.

New Series - new features

Water consumption reduced to 300 litres per hour.
Full width doors for easy access.
Double side rack drive.
Easy fit wash arm cassettes.
Rounded wash tank for ease of cleaning.

Washtech CD Range Features

Low water consumption
Rinse economiser - machine uses water only when rack is in rinse zone
Powerful wash via removable upper and lower stainless wash arms
Automatic tank fill and run-dry protection for incalloy heating elements
Interlocked wash and rinse heating
Low temperature deactivation to ensure hygiene and regulatory compliance
Powerful drive with safety clutch and optional bench stop switch
Safety stop switches to all doors
Vent hoods fitted standard with duct connections, baffles & easy bench connection
Full width easily removable wash filter trays
All stainless steel construction
Simple electromechanical controls for ease of service
Adjustable 200mm stainless legs
Modular range include options to allow installation in minimal area
CAD design service for layout options
Nationwide installation and after sales support

Options

Insulation	full machine insulation available
Driers	600 or 1200mm modules up to 18kW
Heat Recovery	to recover heat from exhaust air
Eco rinse	double final rinse for high rinse performance & economy
Neutral zone	enhances machine performance
Auto timer	automatically shuts machine off when not being used
Two speed drive	for different soil loadings
Pre-rinse trough	increases dish processing efficiency
Side load table	facilitates installation in tight areas
Angle feed prewash	reduces space requirements
Corner sections	90 & 180 degree, roller and driven
Roller exit tables	curved & straight in 500mm modules
Limit switch	stops drive & rinse when racks reach end of exit table
Extended height	for oversize washware items
Steam heat	steam wash, rinse and drier heating



CD 100 RACK CONVEYOR DISHWASHER

Over 25 years Washtech has earned the position of Australasia's leading wash equipment manufacturer by providing robust, reliable machines designed for ease of service and years of effective, efficient operation.



ISO 9001 certified and audited since 1993 - our equipment complies with all local hygiene, electrical and plumbing regulations including WATERMARK.



Washtech products are supported nationwide by the MOFFAT Service Network to ensure long term access to parts and after sales support and service including preventative maintenance programmes.



In line with policy to continually develop and improve it's products Moffat reserves the right to change specifications and design without notice.

MOFFAT

www.moffat.com.au

24 HOUR SERVICE

1800 622 216

REPLACEMENT PARTS

1800 337 963

Australia Moffat Pty Limited

Victoria/Tasmania
740 Springvale Road
Mulgrave, Victoria 3170
Telephone 03 9518 3888
Facsimile 03 9518 3833
Email vsales@moffat.com.au
www.moffat.com.au

New South Wales
Telephone 02 8833 4111
Email nswsales@moffat.com.au

South Australia
Telephone 03 9518 3888
Email vsales@moffat.com.au

Queensland
Telephone 07 3630 8600
Email qldsales@moffat.com.au

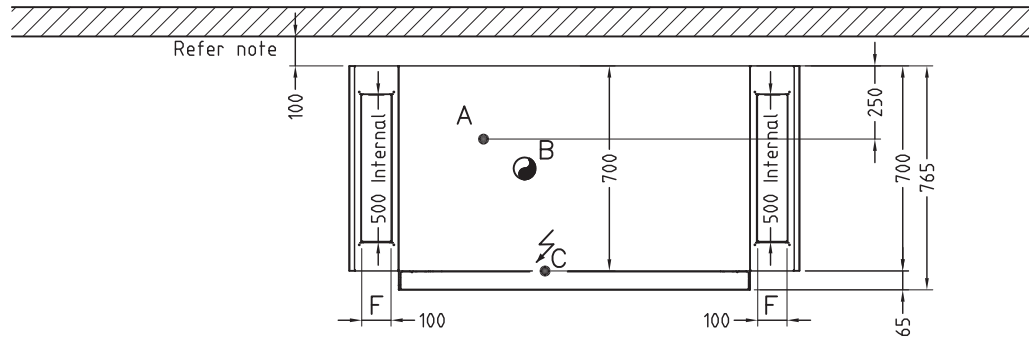
Western Australia
Telephone 08 9202 6820
Email bgarcia@moffat.com.au

Effective May 2010

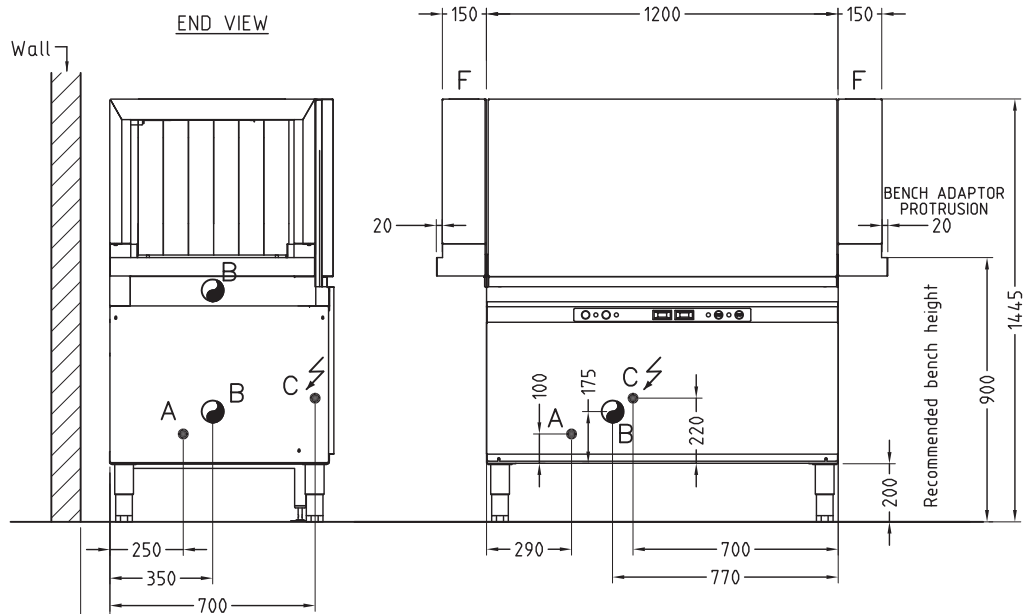
CD100 INSTALLATION DIAGRAM

CD100 MK2 02-09-09 1A

PLAN VIEW



FRONT VIEW



Recommended minimum of 100mm in which case all services can be located centred 50mm off wall, and bench depth = 750mm. Gap to wall may be reduced to 75mm and bench to 700mm but services must then come through floor in adjacent location as shown.

CONNECTIONS			Ø
A	HOT WATER INLET = 65°C	>200-400 kPa	AUS = 3/4" NZ = 1/2"
B	TANK DRAINAGE POINT IS RECOMMENDED MINIMUM WASTE PIPE	1.5" BSP = 2" BSP =	40mm 50mm
C	ELECTRICAL CONNECTION 400/415V, 3-N+E~	CD200 =	25A
⊗	SHOWS RECOMMENDED FLOOR PENETRATION. POSITION FOR WASTE AND SUPPLY		
F	EXTRACTION VIA VENT DUCTS, Split specified airflow between inlet & outlet and allow for steam. Provide & adjust good damper controls. Consult with a Ventilation Engineer particularly when an overhead canopy is fitted in which case requirement for the general area is much greater than specification for the machine.		15m ³ /min 250l /sec